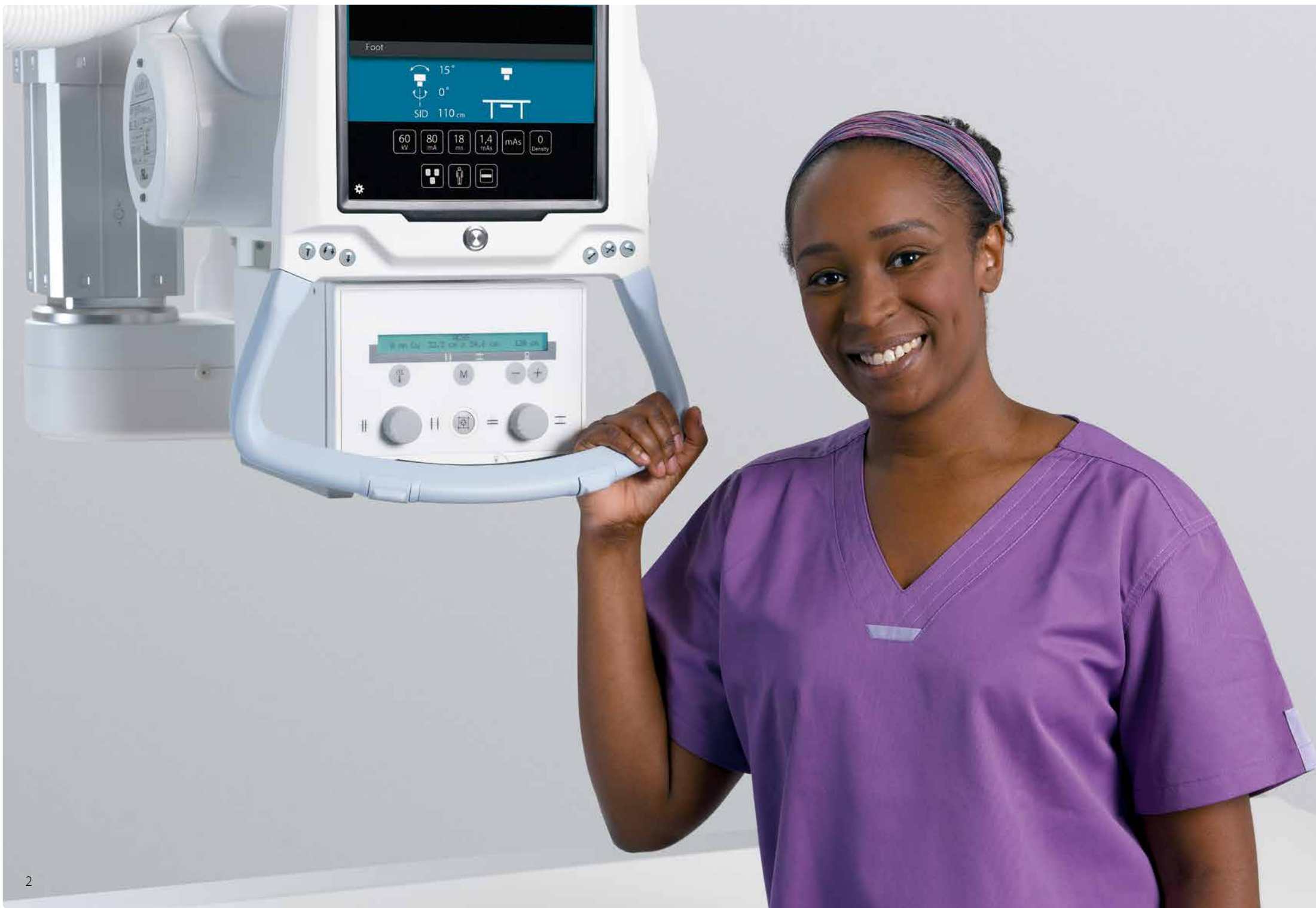




**Aceso**

Modular design,  
superior imaging





# Aceso



Flexible imaging



Flexible installation



Intelligent dose reduction

## Modular design, superior imaging

The versatile digital radiography system Aceso combines outstanding image quality with clinical flexibility and high productivity for a wide range of radiographic applications. Aceso's cost-effective, modular concept allows you to configure the system to precisely fit your room and your clinical requirements.

# Smart technology helps to improve your workflow

With Aceso, you'll find convenience in every detail. The system's ergonomic design and sophisticated auto-tracking technology help you improve productivity and patient throughput. The large touch screen allows you to adjust exposure settings at the patient side before and quick image preview directly after the exposure.



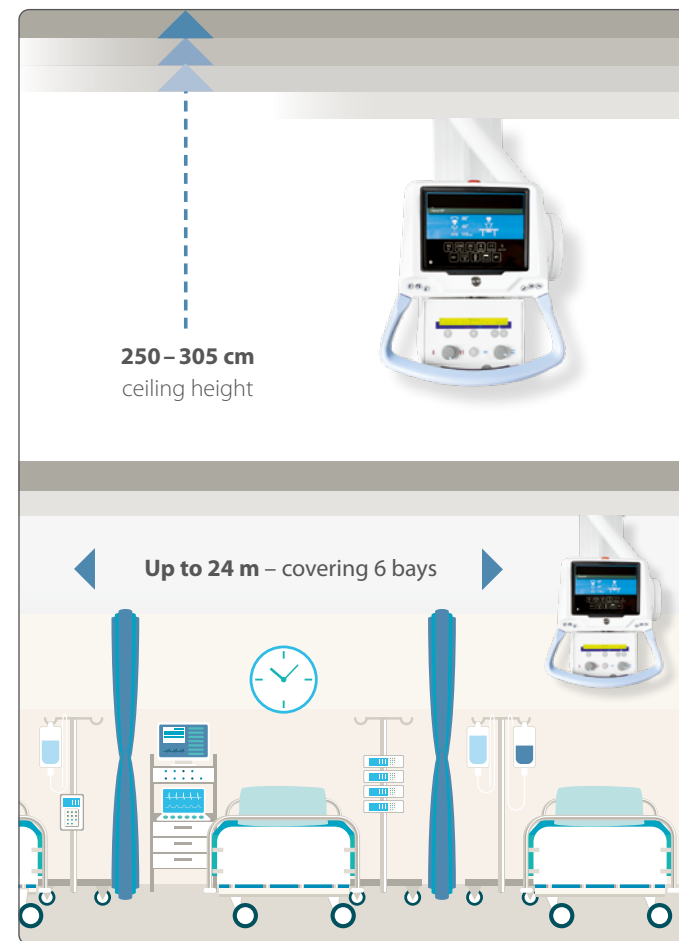
## Intuitive touch tube interface

From patient ID verification to system setting and image preview directly after the image acquisition – with Aceso's large touch tube interface you remain in control at all times.



## An adaptable solution for all needs

Up to 8 fixed or wireless detectors can be used with Aceso to provide optimal patient positioning, imaging flexibility and reach throughout your entire facility.



## Flexible installation, extremely wide range

Aceso's flexible installation requirements with minimum ceiling height of 2.50 m and a horizontal span of up to 24 m allow you to operate the system in virtually any room.





With light manual movements, Aceso is easy to maneuver into perfect position. System settings can be verified conveniently on the large touch tube interface.

# Proven image quality anywhere you need it



Aceso manages up to 8 fixed or portable detectors for optimal imaging flexibility. Specific detectors can not only be selected from the workstation, but also simply by pressing the "Ready" button directly on the device.

Aceso is powered by Canon's next generation wireless detectors and imaging software. The ultra-light-weight, waterproof detectors with integrated battery and image storage can be used inside the system or stand-alone as needed.



While charging the battery, the multifunction dock can transfer remotely captured images to your database.





## Safety, comfort and efficiency for you and your patients

All detectors work hand in hand with Canon's software to provide optimized workflow and superior imaging capability with low patient dose. Integrated DICOM dose reporting and exam information add an additional layer of safety for you and your patients.



Canon detectors are IPX7-certified waterproof, making them ideally suited also for emergency and critical care applications where contact with fluids is inevitable at times.



Canon's ultra-lightweight, yet robust detectors are easy to carry and comfortable to hold. Integrated hand grips on all four sides make them even more effective to transport.



The robust carbon-fibre enforced detectors are lightweight and durable. Withstanding loads of up to 310 kg, the detectors are ideal for direct weight-bearing imaging with obese patients.

# Intuitive operation, optimal clinical result

Canon's imaging and patient management software helps you streamline your workflow and reduce the steps required to quickly complete each exam. With its intuitive user interface, the software is perfectly suited for all types of DR examinations.



## Common user interface

Canon's entire DR product range shares a common user interface – a major advantage for training, operator comfort and familiarity. At the same time, the software offers numerous configuration options for individual optimization of the user interface.



## Optimized workflow

With advanced applications such as auto-stitching and a wide range of configurations the system can easily handle daily routine as well as more demanding exams.



## Automated dose reporting

With DICOM compatibility, including structured dose reporting, the software enables cross-platform connectivity and automatic patient dose reporting.



## Stand-alone mode

With integrated battery and sufficient onboard storage for up to 99 images, you can acquire images throughout the department.

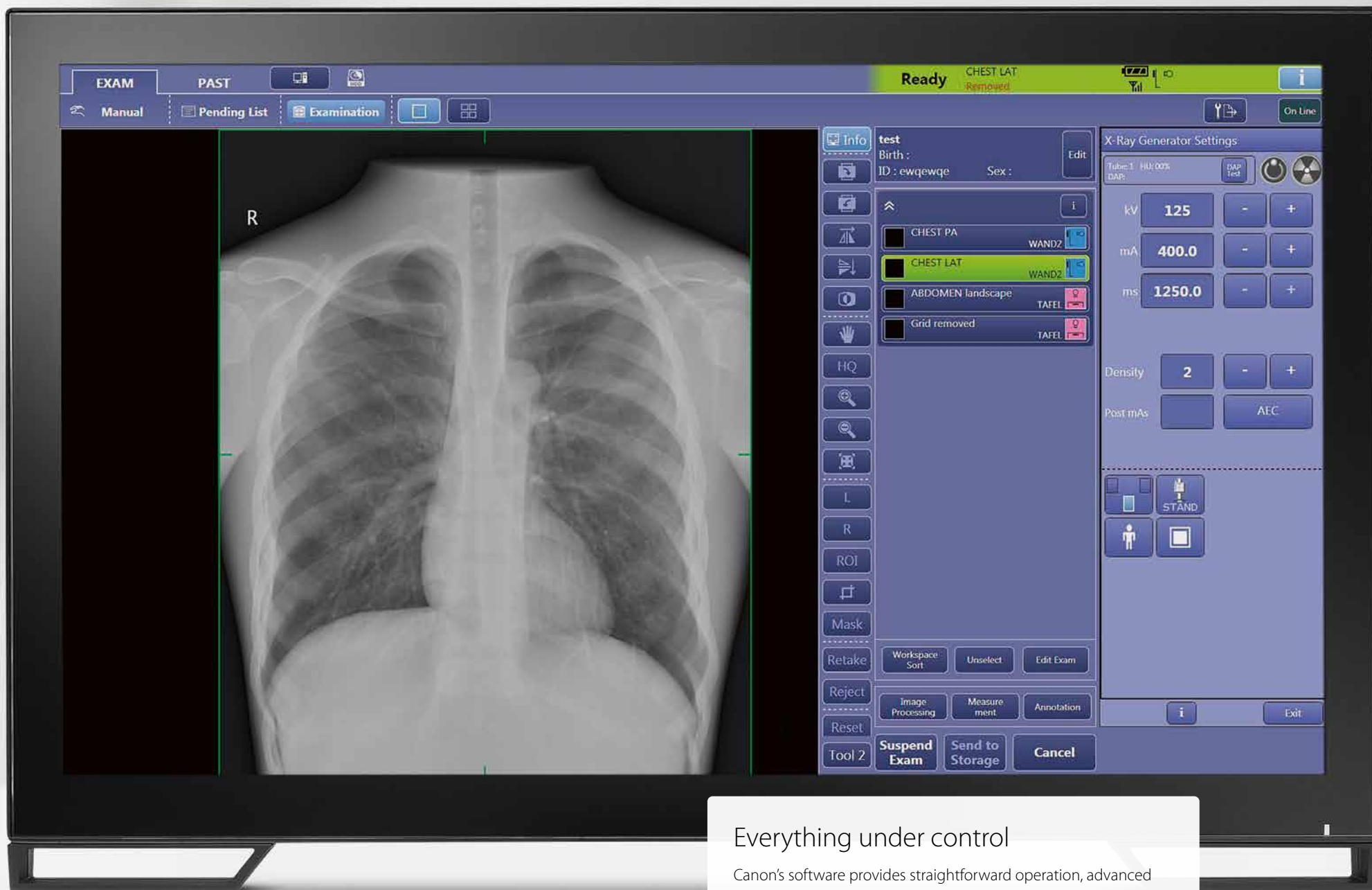


## Easy panel selection

When using multiple FPDs, a specific detector can be selected on the workstation or simply by pressing the 'Ready' button on the detector.







## Everything under control

Canon's software provides straightforward operation, advanced post-processing and comprehensive imaging management capabilities, so you always get the optimal result quickly and with ease.

# Optimal imaging, consistent results

Aceso's comprehensive image processing functions and advanced imaging options enable you to consistently achieve optimal image quality with the lowest possible dose.

Full spine

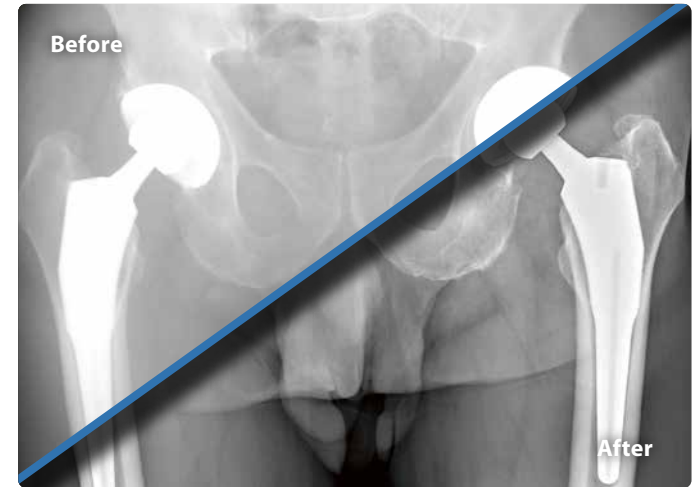


Long leg



## One-shot long-length imaging

Compared to conventional stitching, Canon's unique one-shot long length solution provides faster exams with higher image quality and lower dose.



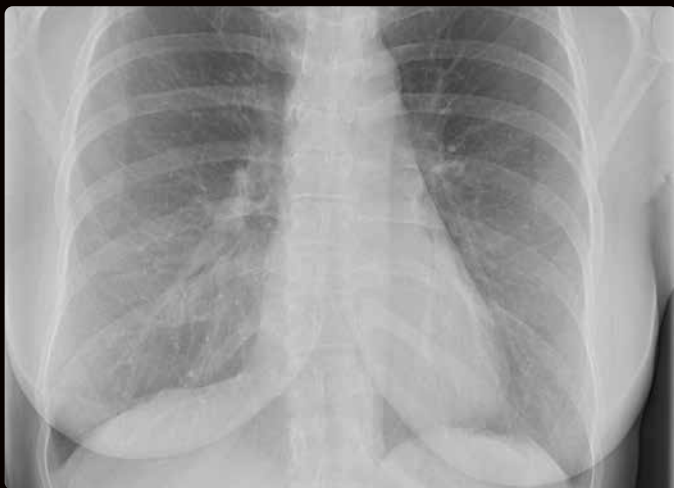
## Dynamic image enhancement

Canon's imaging software provides you with a wide range of functions to optimize imaging contrast while optimizing dose.



## Scatter correction

The optional scatter correction software allows you to obtain optimal image quality at significantly lower dose compared to imaging with a grid.



Canon CXDI post-processing offers dedicated LUT-curves for various anatomical regions. This ensures optimal image quality for all body parts.



Sharpness adjustment can provide the perfect amount of bone structure and sharpness for your personal preference.



High image quality combined with low dose provides optimal pediatric imaging.



Automatic mask adjustment recognizes collimator blade positioning, minimizing manual post-exposure adjustment.



Dynamic range adjustment offers excellent image contrast tailored to the body part.



CDXI post-processing can provide contrast boost to achieve the best image outcome.



# Aceso



CANON MEDICAL SYSTEMS EUROPE B.V.

<https://eu.medical.canon>

©Canon Medical Systems Corporation 2020. All rights reserved.  
Design and specifications subject to change without notice.  
RCAXR0001EUC 2020-02 CMSE/Printed in Europe

Made for Life is a trademark of Canon Medical Systems Corporation.  
Aceso is manufactured by Arcoma AB and distributed by Canon Medical Systems Europe.  
Canon flat panel detectors and associated imaging and patient management software as shown in this brochure are provided separately by Canon Inc or its local representatives and are not part of the Aceso product.

Your Canon dealer:

Disclaimer: Some features presented in this brochure may not be commercially available on all systems shown or may require the purchase of additional options. Please contact your local Canon Medical Systems representative for details.

*Made For life*